

Signify Classified - Internal
Cooper Lighting Solutions Photometric Lab
1121 Highway 74 South
Peachtree City, GA 30269



Scaled data based on original data using
LM-79-2019 Approved Method: Electrical and Photometric Measurements of Solid-
State Lighting Products

Test Report Prepared for

Cooper Lighting Solutions

Brand: McGRAW-EDISON

Report Number: P631059

Luminaire Tested: GWS-SA1E-830-U-SLR-W-GRSWH

Issue Date: 1/10/2023

Test Information

Test Method: LM-79-2019
Report Number: P631059
TEST IS SCALED FROM IESNA LM-79-08 TEST DATA (G2-2209-782-43)
Test Lab: COOPER LIGHTING SOLUTIONS
Issue Date: 1/10/2023
Manufacturer: COOPER LIGHTING SOLUTIONS
Product Line: McGRAW-EDISON
Catalog Number: GWS-SA1E-830-U-SLR-W-GRSWH
Description: GALLEON WALL SLIM LUMINAIRE. (1) LIGHTSQUARES WITH 16 LEDS EACH AND
SPILL LIGHT ELIMINATOR RIGHT OPTICS W/ FACTORY INSTALLED GLARE SHIELD, WH
Light Source: (16) 3000K CCT, 80 CRI LEDS
Ballast/Driver: -

Summary

Lumens per Lamp: N/A
Luminaire Lumens: 4709.7 lumens
Efficiency: N/A
Efficacy: 80.6 lumens/watt
Luminous Opening: Rectangular (W 0.5' x L: 0.5' x H: 0')
IES Classification: Type III - Short
BUG Rating: B1 - U0 - G1

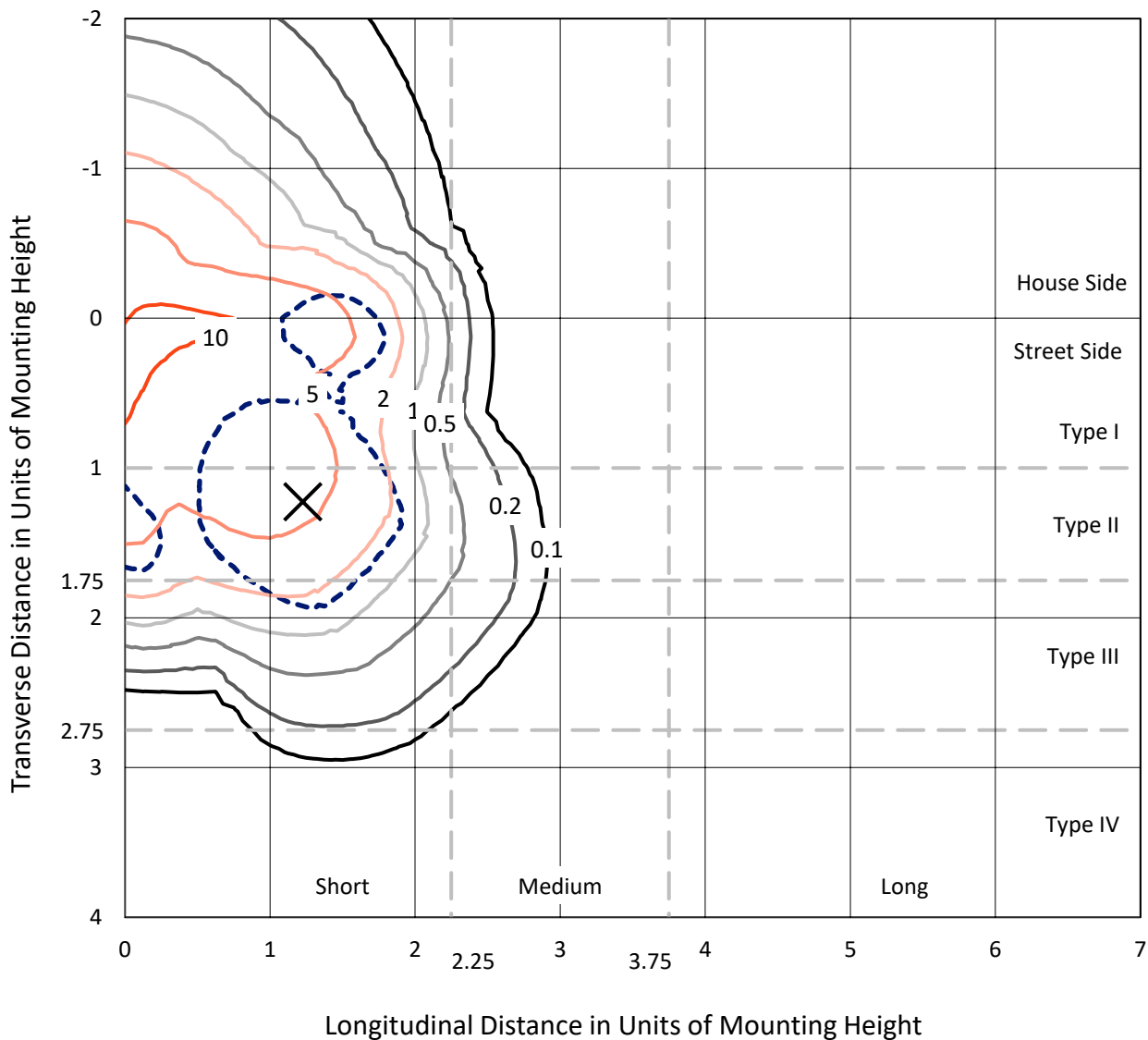
Input Watts (W): 58.4
Input Voltage (V): 120
Input Current (Ain): NR
Voltage Rise (V): NR
Power Factor: NR
Total Harmonic Distortion (THDi): NR
Frequency (hertz): 0
Stabilization Time: NR
Operation Time: NR
Ambient Temperature (°C): NR
Test Distance: 28.75 FT



REPORT NUMBER: P631059
 CATALOG NUMBER: GWS-SA1E-830-U-SLR-W-GRSWH

Iso-Footcandle Lines of Horizontal Illumination

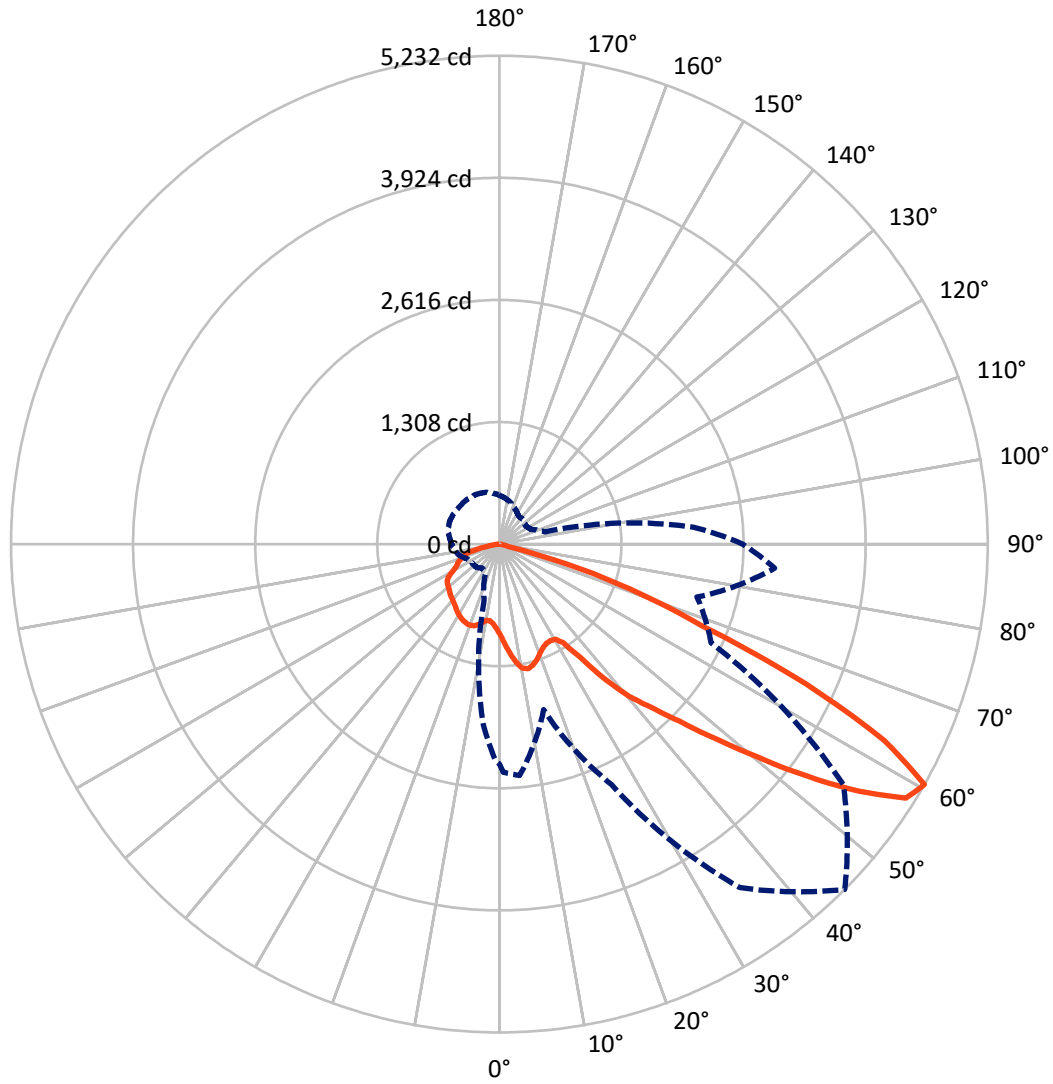
✕ Max cd
 - - - 1/2 Max cd



Based on 10 foot mounting height. Maximum calculated value = 12.9 fc
 Type III - Short - N/A

REPORT NUMBER: P631059
CATALOG NUMBER: GWS-SA1E-830-U-SLR-W-GRSWH

Luminous Intensity Polar Plot



— Vertical Plane Through 45-Deg Lateral - - - Horizontal Cone Through 60-Deg Vertical

REPORT NUMBER: P631059

CATALOG NUMBER: GWS-SA1E-830-U-SLR-W-GRSWH

FLUX DISTRIBUTION:

		Downward	Upward	Total
House Side	Lumens	1650.9	0.0	1650.9
	% Fixture	35.1	0.0	35.1
Street Side	Lumens	3058.8	0.0	3058.8
	% Fixture	64.9	0.0	64.9
Total	Lumens	4709.7	0.0	4709.7
	% Fixture	100.0	0.0	100.0

ZONAL LUMENS:

Zone	Lumens	% Fixture
0°-10°	94.4	2.0
10°-20°	298.3	6.3
20°-30°	484.5	10.3
30°-40°	683.3	14.5
40°-50°	944.4	20.1
50°-60°	1215.7	25.8
60°-70°	770.3	16.4
70°-80°	197.7	4.2
80°-90°	21.1	0.4
90°-100°	0.0	0.0
100°-110°	0.0	0.0
110°-120°	0.0	0.0
120°-130°	0.0	0.0
130°-140°	0.0	0.0
140°-150°	0.0	0.0
150°-160°	0.0	0.0
160°-170°	0.0	0.0
170°-180°	0.0	0.0
0°-90°	4709.7	100.0
0°-180°	4709.7	100.0

Coefficient of Utilization



REPORT NUMBER: P631059

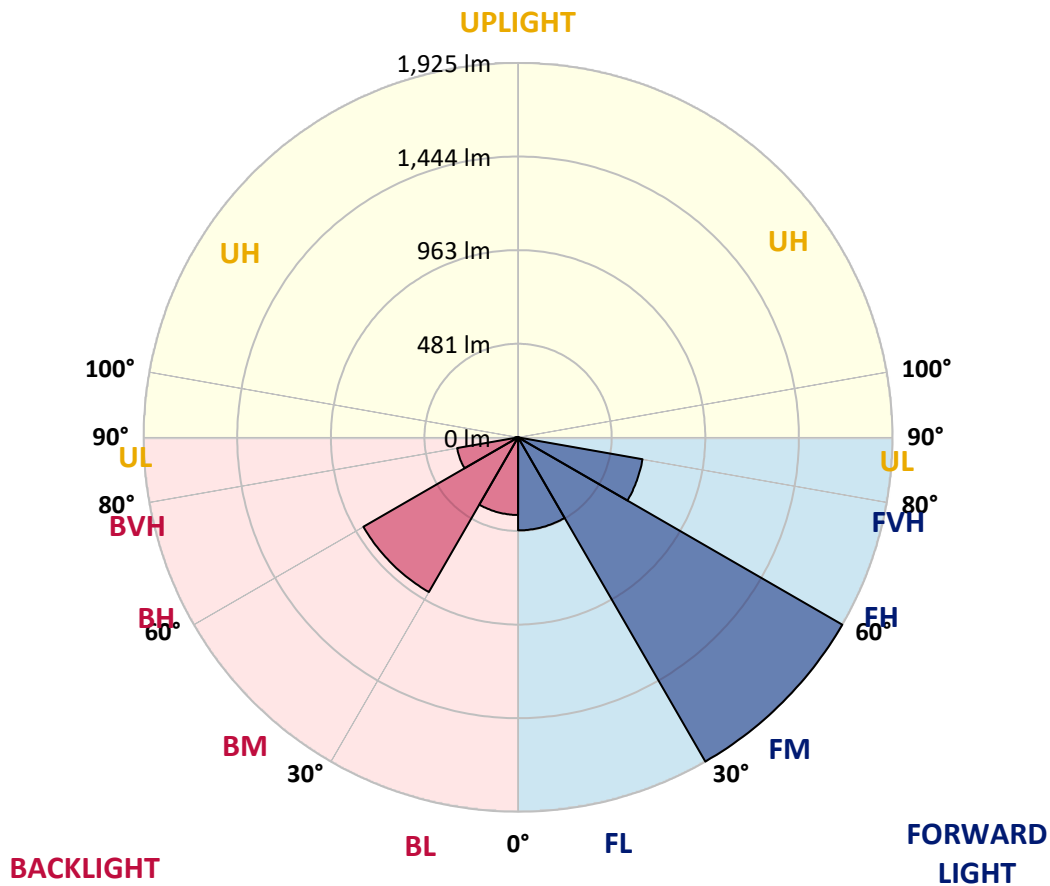
CATALOG NUMBER: GWS-SA1E-830-U-SLR-W-GRSWH

LUMINAIRE CLASSIFICATION SYSTEM LUMEN TABLE AND BUG RATING:

Zone	Lumens	% Fixture	Zone Rating/Lumen Limit		
			B	U	G
FL (0°-30°)	478.2	10.2			
FM (30°-60°)	1925.1	40.9			
FH (60°-80°)	649.8	13.8			G0/660
FVH (80°-90°)	5.7	0.1			G0/10
BL (0°-30°)	399.0	8.5	B1/500		
BM (30°-60°)	918.4	19.5	B1/1000		
BH (60°-80°)	318.2	6.8	B1/500		G1/500
BVH (80°-90°)	15.4	0.3			G1/100
UL (90°-100°)	0.0	0.0		U0/0	
UH (100°-180°)	0.0	0.0		U0/0	

BUG Rating: B1-U0-G1

Type III Short





REPORT NUMBER: P631059

CATALOG NUMBER: GWS-SA1E-830-U-SLR-W-GRSWH

CANDELA DISTRIBUTION (FULL):

	0°	1°	5°	15°	25°	35°	45°	55°	65°	75°	85°
0°	967.5	967.5	967.5	967.5	967.5	967.5	967.5	967.5	967.5	967.5	967.5
2.5°	1012.0	1018.9	1023.2	1031.4	1046.1	1054.2	1063.3	1053.4	1056.0	1054.7	1038.7
5°	1071.9	1080.1	1091.4	1115.5	1142.7	1157.8	1172.1	1169.9	1156.5	1134.1	1118.1
7.5°	1128.0	1137.5	1157.0	1196.2	1236.4	1259.7	1276.9	1265.7	1254.5	1219.1	1179.0
10°	1172.1	1177.7	1204.0	1256.6	1303.2	1329.6	1350.7	1348.1	1332.6	1292.9	1238.9
12.5°	1213.5	1217.4	1245.9	1298.5	1340.4	1352.0	1369.3	1374.9	1369.7	1339.9	1286.8
15°	1257.9	1265.3	1291.6	1331.7	1350.7	1338.6	1344.7	1360.2	1374.9	1374.9	1326.1
17.5°	1299.4	1305.8	1332.6	1349.9	1331.7	1299.8	1301.5	1321.4	1356.3	1393.0	1361.9
20°	1336.0	1342.1	1368.4	1352.0	1294.6	1248.0	1246.7	1270.9	1327.4	1404.7	1400.3
22.5°	1376.2	1384.8	1406.8	1353.7	1260.1	1201.0	1200.5	1225.6	1302.0	1416.3	1444.4
25°	1433.1	1446.5	1457.7	1368.8	1241.5	1170.3	1175.9	1199.7	1293.8	1435.3	1509.5
27.5°	1517.7	1528.5	1527.6	1400.3	1240.7	1157.8	1169.5	1197.1	1308.4	1469.0	1578.1
30°	1609.2	1614.8	1605.8	1444.4	1260.5	1165.6	1182.8	1215.6	1345.5	1524.6	1679.1
32.5°	1710.6	1717.5	1700.3	1510.4	1306.7	1223.0	1261.0	1276.9	1397.8	1604.9	1786.1
35°	1827.1	1840.5	1804.7	1597.6	1442.6	1432.3	1487.5	1466.8	1508.7	1699.8	1900.5
37.5°	1949.7	1950.1	1898.8	1726.6	1709.3	1727.0	1837.5	1772.8	1743.8	1805.6	2017.0
40°	2053.7	2051.1	1972.1	1900.5	1941.5	2011.8	2145.2	2045.9	1970.0	1947.5	2113.7
42.5°	2157.7	2148.2	2068.4	2011.0	2101.6	2246.2	2396.8	2275.1	2115.0	2076.6	2209.0
45°	2290.6	2287.6	2191.4	2055.0	2246.2	2508.5	2708.3	2511.1	2200.8	2151.7	2367.9
47.5°	2505.1	2490.4	2311.3	2051.5	2381.7	2858.1	3110.5	2808.5	2260.8	2153.4	2624.2
50°	2714.8	2696.7	2454.6	2051.1	2521.5	3220.6	3585.2	3169.7	2322.1	2163.7	2884.8
52.5°	2926.7	2926.7	2689.8	2099.9	2668.2	3625.4	4133.7	3619.7	2426.5	2299.2	3205.5
55°	3052.7	3086.4	2954.3	2182.3	2840.0	4101.8	4676.2	4105.7	2587.9	2543.9	3501.5
57.5°	2892.6	2955.6	2936.6	2124.9	2941.4	4451.8	5136.2	4474.2	2667.8	2572.8	3457.1
60°	2357.1	2444.7	2488.3	1834.9	2841.3	4492.3	5232.4	4498.4	2502.9	2190.9	2961.2
62.5°	1566.9	1639.0	1705.4	1311.0	2459.8	4041.4	4627.8	4042.7	2090.4	1635.1	2051.5
65°	768.6	822.1	893.7	775.0	1921.6	3376.8	3608.1	3266.8	1512.1	915.3	1046.5
67.5°	201.1	216.2	226.1	300.8	1376.6	2426.1	2353.2	2389.4	971.4	299.1	273.6
70°	104.4	105.3	104.9	124.3	930.4	1541.9	1621.7	1500.5	677.9	125.1	107.9
72.5°	74.7	75.1	73.8	83.7	449.2	883.4	915.3	905.4	355.2	74.2	73.8
75°	48.8	49.2	48.3	49.2	67.8	100.5	92.8	97.5	59.1	47.0	47.0
77.5°	28.9	29.3	28.9	29.8	28.9	28.9	26.8	26.8	25.5	25.5	25.9
80°	19.4	19.4	19.0	19.9	18.1	18.1	17.3	16.8	15.5	15.1	15.1
82.5°	11.7	12.1	11.7	11.7	10.8	10.8	9.9	9.5	8.2	8.2	7.8
85°	6.0	6.0	5.6	5.6	4.7	4.3	3.5	3.5	2.6	2.2	2.2
87.5°	0.9	0.9	0.4	0.4	0.0	0.0	0.0	0.0	0.0	0.0	0.0
90°	0.0	0.0	0.0	0.0	0.0	0.0	0.0	0.0	0.0	0.0	0.0



REPORT NUMBER: P631059

CATALOG NUMBER: GWS-SA1E-830-U-SLR-W-GRSWH

CANDELA DISTRIBUTION (continued):

	90°	95°	105°	115°	125°	135°	145°	155°	165°	175°	180°
0°	967.5	967.5	967.5	967.5	967.5	967.5	967.5	967.5	967.5	967.5	967.5
2.5°	1034.4	1025.8	1012.8	1000.3	988.7	976.6	962.8	948.5	936.4	923.9	917.5
5°	1097.0	1079.3	1045.6	1015.8	989.1	967.1	943.3	923.1	904.1	888.5	880.8
7.5°	1153.5	1125.9	1075.0	1027.9	991.7	961.5	928.7	898.5	873.0	854.0	846.7
10°	1205.7	1172.9	1106.0	1046.5	1004.2	970.5	930.4	889.4	855.7	830.7	824.7
12.5°	1248.0	1210.5	1130.6	1061.6	1011.5	975.3	939.9	904.5	871.3	838.9	833.7
15°	1285.6	1241.1	1149.2	1071.1	1008.9	962.8	933.0	928.7	928.7	892.0	881.6
17.5°	1317.9	1269.2	1164.3	1075.4	992.5	925.7	907.5	945.1	987.4	961.0	937.7
20°	1355.0	1295.9	1176.8	1075.4	962.3	878.6	876.9	940.8	1003.3	1003.8	979.2
22.5°	1392.6	1327.0	1191.5	1071.5	920.9	824.2	856.2	923.5	979.2	1002.9	986.1
25°	1453.4	1370.1	1214.8	1068.5	872.6	787.1	837.6	900.6	947.7	972.7	961.9
27.5°	1530.7	1427.1	1250.2	1073.2	824.7	765.1	817.8	870.8	913.6	935.6	927.8
30°	1617.0	1492.7	1288.1	1081.4	790.1	753.9	794.0	836.8	874.7	896.7	893.3
32.5°	1727.0	1563.9	1320.9	1070.2	770.7	748.3	769.0	799.6	836.3	850.1	853.2
35°	1858.6	1642.4	1346.0	1026.2	753.0	742.2	741.8	760.8	786.7	808.7	810.9
37.5°	1979.9	1734.4	1373.6	950.7	721.1	727.1	709.9	721.1	746.6	768.6	777.2
40°	2099.9	1827.6	1412.0	854.4	679.2	693.5	673.2	681.0	701.3	730.2	744.0
42.5°	2216.4	1911.7	1452.6	756.1	637.4	646.4	631.3	639.1	660.3	696.5	712.0
45°	2343.3	2025.6	1484.1	663.3	601.1	597.2	585.2	596.4	628.3	668.0	686.6
47.5°	2583.2	2205.2	1504.8	601.6	581.7	553.7	539.9	564.0	600.3	640.4	662.8
50°	2876.2	2465.0	1498.7	562.3	564.9	508.8	504.0	536.0	574.8	616.7	641.3
52.5°	3108.4	2720.0	1430.1	524.8	532.1	480.3	466.5	513.1	550.2	592.9	618.4
55°	3285.7	2805.9	1219.5	480.3	478.6	459.6	430.7	489.4	525.6	565.3	592.9
57.5°	3141.2	2614.7	904.1	419.0	408.7	418.6	390.5	449.2	495.4	534.7	559.3
60°	2606.9	2084.8	503.6	371.1	341.8	365.9	361.6	406.9	462.6	504.0	525.2
62.5°	1769.7	1388.3	298.6	293.4	277.0	311.6	334.4	364.2	419.0	452.7	472.5
65°	882.1	674.5	198.5	219.7	221.8	256.3	299.5	332.3	378.0	412.6	432.4
67.5°	255.9	209.7	151.0	167.9	191.2	218.8	253.3	292.2	336.6	377.6	400.9
70°	110.5	111.8	120.0	139.8	162.7	191.2	225.7	263.7	301.2	332.7	350.4
72.5°	78.1	81.1	90.2	110.5	132.1	159.2	193.8	230.4	257.6	289.6	308.1
75°	50.1	52.2	59.6	75.1	91.1	117.4	150.2	183.8	211.9	234.8	252.5
77.5°	27.6	28.1	34.1	43.2	53.9	70.8	94.9	121.3	142.0	154.9	170.9
80°	16.0	16.0	19.0	24.6	31.1	41.4	54.8	67.8	80.3	88.5	96.2
82.5°	8.6	8.6	9.9	13.4	16.8	22.9	30.6	37.1	44.9	49.2	54.4
85°	2.6	2.6	3.5	4.7	6.0	8.6	12.1	15.5	19.0	22.0	25.0
87.5°	0.0	0.0	0.0	0.0	0.0	0.0	0.0	0.0	0.0	0.0	0.4
90°	0.0	0.0	0.0	0.0	0.0	0.0	0.0	0.0	0.0	0.0	0.0



REPORT NUMBER: P631059

CATALOG NUMBER: GWS-SA1E-830-U-SLR-W-GRSWH

CANDELA DISTRIBUTION (continued):

	185°	195°	205°	215°	225°	235°	245°	255°	265°	270°	275°
0°	967.5	967.5	967.5	967.5	967.5	967.5	967.5	967.5	967.5	967.5	967.5
2.5°	916.2	910.1	906.7	902.3	903.6	899.8	897.6	898.9	891.1	898.9	906.7
5°	877.8	869.1	862.2	856.6	854.0	848.8	845.8	845.8	841.1	848.8	858.3
7.5°	844.1	837.2	833.7	830.3	826.4	821.7	816.5	814.7	811.7	819.9	828.1
10°	821.7	822.5	824.7	829.4	828.6	825.5	817.8	813.5	813.5	822.9	835.5
12.5°	832.0	841.1	846.2	854.9	856.6	854.0	846.2	842.8	851.4	865.7	886.4
15°	872.1	878.2	882.5	889.4	889.0	886.8	880.8	883.4	911.8	939.5	958.0
17.5°	915.7	908.8	908.0	912.3	913.6	911.0	907.5	919.2	966.2	992.1	1001.6
20°	947.2	923.5	918.3	920.0	923.5	922.2	922.2	941.2	990.0	1002.0	990.0
22.5°	956.7	923.1	915.3	915.7	920.5	920.9	923.1	942.9	971.4	971.8	953.3
25°	941.6	909.3	903.6	904.5	910.1	909.7	910.5	921.8	934.3	929.1	915.3
27.5°	913.1	885.1	883.4	888.1	895.4	891.6	889.0	892.0	898.0	891.6	879.5
30°	880.8	857.0	857.9	867.0	874.7	868.3	861.8	863.5	863.9	857.0	843.2
32.5°	846.7	829.0	832.0	841.5	850.6	843.7	836.8	835.9	827.7	819.5	806.1
35°	812.6	805.7	809.6	817.3	825.1	819.5	815.2	812.6	794.9	782.8	771.6
37.5°	781.5	786.7	793.6	798.3	800.9	800.5	797.9	791.9	768.6	754.3	739.7
40°	753.9	769.9	777.2	779.4	783.2	782.4	781.9	773.3	742.7	727.6	710.7
42.5°	728.9	751.3	763.8	766.0	768.1	768.6	767.3	754.8	719.8	702.1	686.1
45°	704.7	734.0	750.0	747.9	750.9	750.9	752.2	735.8	697.4	679.2	662.4
47.5°	683.6	718.1	732.8	730.2	731.9	733.2	734.5	715.5	672.8	655.5	638.2
50°	664.1	700.8	713.3	714.2	714.2	717.2	716.8	698.2	652.1	633.5	616.2
52.5°	643.4	683.1	696.5	702.1	703.8	705.1	699.1	677.5	630.9	608.5	592.5
55°	619.3	665.0	677.1	684.4	687.9	687.0	678.8	656.8	609.3	586.9	568.8
57.5°	582.6	626.2	643.4	646.9	652.5	649.0	639.5	621.0	574.8	552.4	533.8
60°	542.4	573.9	587.8	590.8	586.5	587.8	586.5	568.8	528.6	510.9	492.0
62.5°	489.8	517.8	532.5	536.4	529.1	533.8	532.1	510.1	469.9	451.4	434.6
65°	450.1	480.7	498.0	500.2	498.0	500.2	494.1	467.4	429.4	410.4	393.1
67.5°	419.0	450.5	468.7	474.7	472.5	472.1	462.6	431.5	392.3	371.6	349.5
70°	365.5	393.1	416.4	431.1	431.1	422.9	404.8	375.9	344.4	326.7	309.4
72.5°	323.7	358.6	381.5	396.6	399.6	394.9	369.4	338.8	302.5	284.8	266.7
75°	266.7	300.8	325.4	345.2	349.1	343.9	314.6	284.4	250.7	233.5	215.3
77.5°	178.2	198.5	218.4	236.5	232.6	236.1	216.2	193.3	172.6	159.7	151.5
80°	100.5	113.9	120.0	129.9	129.9	129.9	116.9	106.2	94.5	87.2	79.0
82.5°	57.0	65.6	68.2	76.4	78.5	79.0	70.3	63.4	56.1	52.2	46.6
85°	26.3	31.1	31.5	36.2	38.0	41.4	37.5	32.8	28.5	26.8	23.3
87.5°	0.9	2.6	3.5	6.5	8.6	9.9	10.8	10.8	9.1	8.2	6.9
90°	0.0	0.0	0.0	0.0	0.0	0.0	0.0	0.0	0.0	0.0	0.0



REPORT NUMBER: P631059

CATALOG NUMBER: GWS-SA1E-830-U-SLR-W-GRSWH

CANDELA DISTRIBUTION (continued):

	285°	295°	305°	315°	325°	335°	345°	355°	359°	360°
0°	967.5	967.5	967.5	967.5	967.5	967.5	967.5	967.5	967.5	967.5
2.5°	916.2	926.5	938.6	947.2	962.8	975.7	989.1	1003.8	1014.5	1012.0
5°	870.0	887.2	909.3	929.5	958.4	987.8	1020.2	1053.4	1072.8	1071.9
7.5°	844.1	868.7	895.4	922.6	956.7	999.0	1048.6	1100.4	1126.7	1128.0
10°	857.9	884.2	902.3	925.2	961.0	1014.1	1073.7	1135.8	1166.0	1172.1
12.5°	901.5	899.3	898.0	914.4	957.6	1024.9	1097.8	1172.1	1206.2	1213.5
15°	942.9	898.5	871.7	882.9	942.0	1031.8	1121.6	1211.8	1250.2	1257.9
17.5°	950.7	883.4	833.7	841.5	917.5	1034.0	1144.4	1250.6	1292.0	1299.4
20°	929.1	863.9	806.1	795.3	886.4	1028.4	1158.7	1283.0	1328.3	1336.0
22.5°	901.9	846.7	785.4	757.4	848.4	1022.7	1174.6	1317.1	1369.3	1376.2
25°	873.4	824.7	766.0	723.3	805.3	1019.3	1201.4	1361.9	1424.9	1433.1
27.5°	843.2	797.9	749.2	706.9	765.6	1023.6	1239.4	1434.4	1506.1	1517.7
30°	810.9	771.2	738.4	701.3	738.4	1027.5	1281.2	1508.7	1592.8	1609.2
32.5°	777.2	746.6	727.1	703.8	721.5	1018.4	1317.9	1591.9	1696.4	1710.6
35°	743.5	721.5	712.9	708.6	699.1	985.2	1347.7	1676.1	1814.6	1827.1
37.5°	712.0	695.6	693.1	697.8	664.6	930.8	1382.2	1783.1	1930.7	1949.7
40°	682.7	667.6	667.2	666.3	626.6	856.6	1428.8	1891.9	2045.1	2053.7
42.5°	655.5	636.5	640.0	629.6	595.5	776.3	1472.8	1984.6	2151.7	2157.7
45°	631.3	606.3	610.2	597.2	580.9	692.2	1511.7	2094.3	2286.7	2290.6
47.5°	608.0	581.3	570.5	569.6	578.3	614.5	1549.7	2305.3	2498.2	2505.1
50°	586.5	557.5	526.9	545.9	562.3	556.3	1597.1	2531.4	2716.5	2714.8
52.5°	565.7	527.8	484.2	520.9	520.9	513.1	1583.7	2668.6	2896.9	2926.7
55°	542.0	479.9	439.7	479.0	460.0	474.3	1346.8	2713.5	3010.4	3052.7
57.5°	495.0	420.8	385.8	406.9	378.5	439.7	967.5	2490.8	2817.5	2892.6
60°	449.7	377.2	354.3	350.4	313.3	358.6	627.0	1950.1	2319.1	2357.1
62.5°	396.6	339.6	320.2	290.4	252.0	261.1	379.8	1283.4	1558.3	1566.9
65°	356.5	307.7	270.6	235.2	206.3	189.4	224.4	618.8	778.9	768.6
67.5°	306.0	263.7	228.3	202.8	179.1	157.9	149.3	183.8	208.0	201.1
70°	272.3	231.7	197.6	173.5	151.5	130.3	115.2	108.3	106.2	104.4
72.5°	234.8	199.4	164.0	140.7	120.0	100.5	86.7	78.5	76.4	74.7
75°	187.3	154.1	121.7	99.7	81.6	67.8	58.7	51.8	50.5	48.8
77.5°	123.9	98.8	72.5	59.1	48.3	41.0	35.0	30.6	29.8	28.9
80°	68.2	57.0	44.4	35.8	28.9	25.0	22.9	20.3	19.9	19.4
82.5°	40.6	34.1	25.5	20.3	16.8	15.1	13.8	12.5	12.1	11.7
85°	20.3	16.0	11.2	9.5	8.6	7.8	7.8	6.5	6.0	6.0
87.5°	5.2	4.3	2.6	2.2	2.2	2.2	1.7	1.3	1.3	0.9
90°	0.0	0.0	0.0	0.0	0.0	0.0	0.0	0.0	0.0	0.0

Cooper Lighting Solutions Photometric Lab
1121 Highway 74 South
Peachtree City, GA 30269



LM-79-2019: Approved Method: Electrical and Photometric Measurements of Solid-State Lighting Products

Report Prepared for

Cooper Lighting Solutions

MCGRAW EDISON

Report Number: SP1-2408-195-9

Test Date: 08/07/2024

Luminaire Tested: GALN-SB1A-830-U-5WQ

Data in this report applies to families of products including GALN-SB1A-830-U-5WQ.

Test Information

Test Method: LM-79-2019
 Report Number: SP1-2408-195-9
 Test Lab: COOPER LIGHTING SOLUTIONS
 Photometer: SP1 - 76IN SPHERE
 Measurement Geometry: 4π
 Issue Date: 08/07/2024
 Manufacturer: COOPER LIGHTING SOLUTIONS
 Product Line: MCGRAW EDISON
 Catalog Number: **GALN-SB1A-830-U-5WQ**
 Description: GALLEON AREA AND ROADWAY LUMINAIRE. (1) 80 CRI, 3000K, 350MA HIGH DENSITY LIGHTSQUARE WITH 26 LEDS AND TYPE V WIDE OPTICS

Spectral Parameters

CCT (K): 3050
 CIE u': 0.2476
 CIE v': 0.5251
 Duv: 0.0034
 CIE x: 0.4383
 CIE y: 0.4131
 CIE z: 0.1487
 Peak Wavelength (nm): 603
 Dominant Wavelength (nm): 581
 Purity: 55.55201
 Rf: 81.5
 Rg: 99.2

CRI (Ra):	81.0		
R1:	79.6	R9:	7.1
R2:	85.6	R10:	67.0
R3:	92.0	R11:	82.7
R4:	82.6	R12:	63.2
R5:	78.9	R13:	80.3
R6:	81.7	R14:	95.0
R7:	85.2	R15:	71.7
R8:	62.0		



Test Conditions

Stabilization Time: 20M
 Operation Time: 1H 20M
 Sphere Temperature (°C): 24.2

REPORT NUMBER: SP1-2408-195-9

Measurement and Test Equipment			
Instrument	Identification Number	Calibration Date	Calibration Due Date
Photometer	IN0058	6/18/2024	12/18/2024
Power Meter	INXT2011004	2/8/2024	2/8/2025
AC Power Source	IN0063	10/24/2023	10/24/2024
DC Power Source	IN0208	10/24/2023	10/24/2024
Sphere Thermometer	IN0085	10/24/2023	10/24/2024
Room Thermometer	IN0046	10/24/2023	10/24/2024

REPORT NUMBER: SP1-2408-195-9

CIE 1931 Chromaticity Diagram



CIE 1931 Chromaticity Diagram with 2017 ANSI 7-Step and 4-Step Quadrangles



Point lies inside the ANSI 3000K 4-step quadrangle

REPORT NUMBER: SP1-2408-195-9

Photopic Flux vs. Wavelength



Photopic Lumens: NR

λ (nm)	Power W [^] /nm	Lumens (ϕ /nm)	λ (nm)	Power W [^] /nm	Lumens (ϕ /nm)	λ (nm)	Power W [^] /nm	Lumens (ϕ /nm)	λ (nm)	Power W [^] /nm	Lumens (ϕ /nm)	λ (nm)	Power W [^] /nm	Lumens (ϕ /nm)
360	0	NR	490	168	NR	620	940	NR	750	35	NR	880	1	NR
365	0	NR	495	233	NR	625	897	NR	755	30	NR	885	1	NR
370	0	NR	500	300	NR	630	847	NR	760	26	NR	890	1	NR
375	0	NR	505	372	NR	635	790	NR	765	22	NR	895	1	NR
380	0	NR	510	430	NR	640	730	NR	770	19	NR	900	1	NR
385	0	NR	515	483	NR	645	668	NR	775	16	NR	905	1	NR
390	0	NR	520	524	NR	650	605	NR	780	14	NR	910	0	NR
395	2	NR	525	555	NR	655	545	NR	785	12	NR	915	0	NR
400	4	NR	530	581	NR	660	485	NR	790	10	NR	920	0	NR
405	7	NR	535	604	NR	665	430	NR	795	9	NR	925	0	NR
410	17	NR	540	623	NR	670	378	NR	800	8	NR	930	0	NR
415	34	NR	545	645	NR	675	331	NR	805	7	NR	935	0	NR
420	68	NR	550	667	NR	680	290	NR	810	6	NR	940	0	NR
425	128	NR	555	693	NR	685	251	NR	815	5	NR	945	0	NR
430	214	NR	560	719	NR	690	218	NR	820	4	NR	950	0	NR
435	339	NR	565	754	NR	695	188	NR	825	4	NR	955	0	NR
440	507	NR	570	791	NR	700	162	NR	830	3	NR	960	0	NR
445	573	NR	575	830	NR	705	139	NR	835	3	NR	965	0	NR
450	356	NR	580	873	NR	710	119	NR	840	3	NR	970	0	NR
455	217	NR	585	913	NR	715	102	NR	845	2	NR	975	0	NR
460	168	NR	590	948	NR	720	88	NR	850	2	NR	980	0	NR
465	113	NR	595	974	NR	725	76	NR	855	2	NR	985	0	NR
470	85	NR	600	994	NR	730	65	NR	860	1	NR	990	0	NR
475	85	NR	605	998	NR	735	55	NR	865	1	NR	995	0	NR
480	94	NR	610	994	NR	740	47	NR	870	1	NR	1000	0	NR
485	120	NR	615	973	NR	745	41	NR	875	1	NR			

REPORT NUMBER: SP1-2408-195-9

Scotopic Flux vs. Wavelength



Scotopic Lumens: NR

S/P: 1.27

λ (nm)	Power W [^] /nm	Lumens (φ/nm)	λ (nm)	Power W [^] /nm	Lumens (φ/nm)	λ (nm)	Power W [^] /nm	Lumens (φ/nm)	λ (nm)	Power W [^] /nm	Lumens (φ/nm)	λ (nm)	Power W [^] /nm	Lumens (φ/nm)
360	0	NR	490	168	NR	620	940	NR	750	35	NR	880	1	NR
365	0	NR	495	233	NR	625	897	NR	755	30	NR	885	1	NR
370	0	NR	500	300	NR	630	847	NR	760	26	NR	890	1	NR
375	0	NR	505	372	NR	635	790	NR	765	22	NR	895	1	NR
380	0	NR	510	430	NR	640	730	NR	770	19	NR	900	1	NR
385	0	NR	515	483	NR	645	668	NR	775	16	NR	905	1	NR
390	0	NR	520	524	NR	650	605	NR	780	14	NR	910	0	NR
395	2	NR	525	555	NR	655	545	NR	785	12	NR	915	0	NR
400	4	NR	530	581	NR	660	485	NR	790	10	NR	920	0	NR
405	7	NR	535	604	NR	665	430	NR	795	9	NR	925	0	NR
410	17	NR	540	623	NR	670	378	NR	800	8	NR	930	0	NR
415	34	NR	545	645	NR	675	331	NR	805	7	NR	935	0	NR
420	68	NR	550	667	NR	680	290	NR	810	6	NR	940	0	NR
425	128	NR	555	693	NR	685	251	NR	815	5	NR	945	0	NR
430	214	NR	560	719	NR	690	218	NR	820	4	NR	950	0	NR
435	339	NR	565	754	NR	695	188	NR	825	4	NR	955	0	NR
440	507	NR	570	791	NR	700	162	NR	830	3	NR	960	0	NR
445	573	NR	575	830	NR	705	139	NR	835	3	NR	965	0	NR
450	356	NR	580	873	NR	710	119	NR	840	3	NR	970	0	NR
455	217	NR	585	913	NR	715	102	NR	845	2	NR	975	0	NR
460	168	NR	590	948	NR	720	88	NR	850	2	NR	980	0	NR
465	113	NR	595	974	NR	725	76	NR	855	2	NR	985	0	NR
470	85	NR	600	994	NR	730	65	NR	860	1	NR	990	0	NR
475	85	NR	605	998	NR	735	55	NR	865	1	NR	995	0	NR
480	94	NR	610	994	NR	740	47	NR	870	1	NR	1000	0	NR
485	120	NR	615	973	NR	745	41	NR	875	1	NR			

REPORT NUMBER: SP1-2408-195-9

Melanopic Flux vs. Wavelength



Melanopic Lumens: NR

M/P: 2.32

λ (nm)	Power W [^] /nm	Lumens (φ/nm)	λ (nm)	Power W [^] /nm	Lumens (φ/nm)	λ (nm)	Power W [^] /nm	Lumens (φ/nm)	λ (nm)	Power W [^] /nm	Lumens (φ/nm)	λ (nm)	Power W [^] /nm	Lumens (φ/nm)
360	0	NR	490	168	NR	620	940	NR	750	35	NR	880	1	NR
365	0	NR	495	233	NR	625	897	NR	755	30	NR	885	1	NR
370	0	NR	500	300	NR	630	847	NR	760	26	NR	890	1	NR
375	0	NR	505	372	NR	635	790	NR	765	22	NR	895	1	NR
380	0	NR	510	430	NR	640	730	NR	770	19	NR	900	1	NR
385	0	NR	515	483	NR	645	668	NR	775	16	NR	905	1	NR
390	0	NR	520	524	NR	650	605	NR	780	14	NR	910	0	NR
395	2	NR	525	555	NR	655	545	NR	785	12	NR	915	0	NR
400	4	NR	530	581	NR	660	485	NR	790	10	NR	920	0	NR
405	7	NR	535	604	NR	665	430	NR	795	9	NR	925	0	NR
410	17	NR	540	623	NR	670	378	NR	800	8	NR	930	0	NR
415	34	NR	545	645	NR	675	331	NR	805	7	NR	935	0	NR
420	68	NR	550	667	NR	680	290	NR	810	6	NR	940	0	NR
425	128	NR	555	693	NR	685	251	NR	815	5	NR	945	0	NR
430	214	NR	560	719	NR	690	218	NR	820	4	NR	950	0	NR
435	339	NR	565	754	NR	695	188	NR	825	4	NR	955	0	NR
440	507	NR	570	791	NR	700	162	NR	830	3	NR	960	0	NR
445	573	NR	575	830	NR	705	139	NR	835	3	NR	965	0	NR
450	356	NR	580	873	NR	710	119	NR	840	3	NR	970	0	NR
455	217	NR	585	913	NR	715	102	NR	845	2	NR	975	0	NR
460	168	NR	590	948	NR	720	88	NR	850	2	NR	980	0	NR
465	113	NR	595	974	NR	725	76	NR	855	2	NR	985	0	NR
470	85	NR	600	994	NR	730	65	NR	860	1	NR	990	0	NR
475	85	NR	605	998	NR	735	55	NR	865	1	NR	995	0	NR
480	94	NR	610	994	NR	740	47	NR	870	1	NR	1000	0	NR
485	120	NR	615	973	NR	745	41	NR	875	1	NR			

Summary

$R_f = 81.5$
 $R_g = 99.2$
 $CIE R_a = 81.0$
 $R_9 = 7.1$



Color Vector Graphics

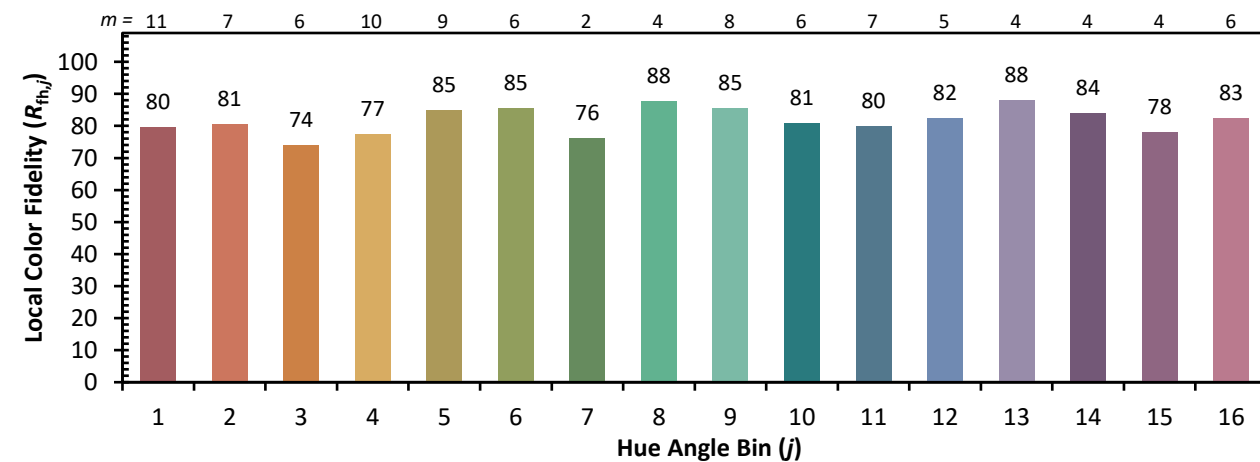
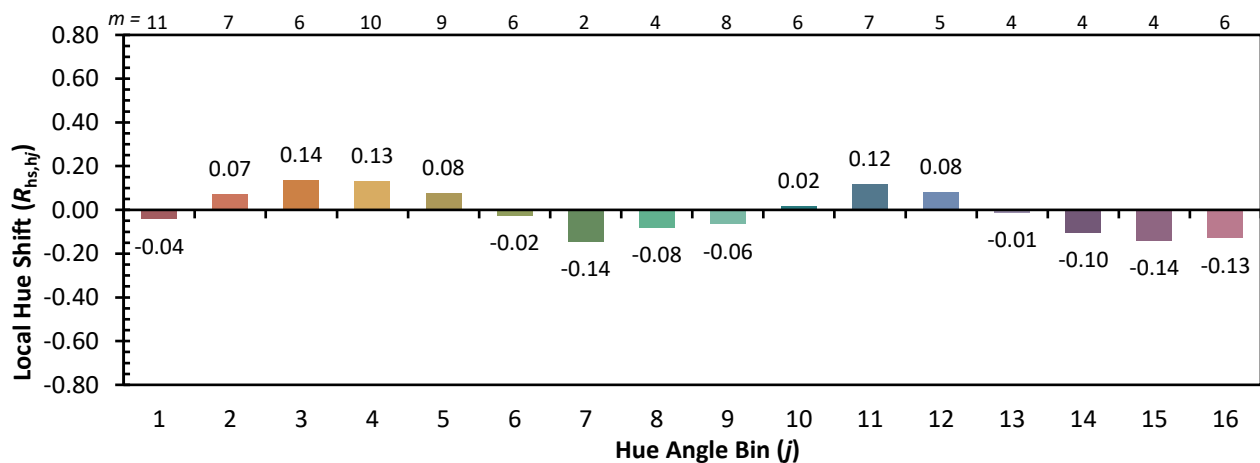
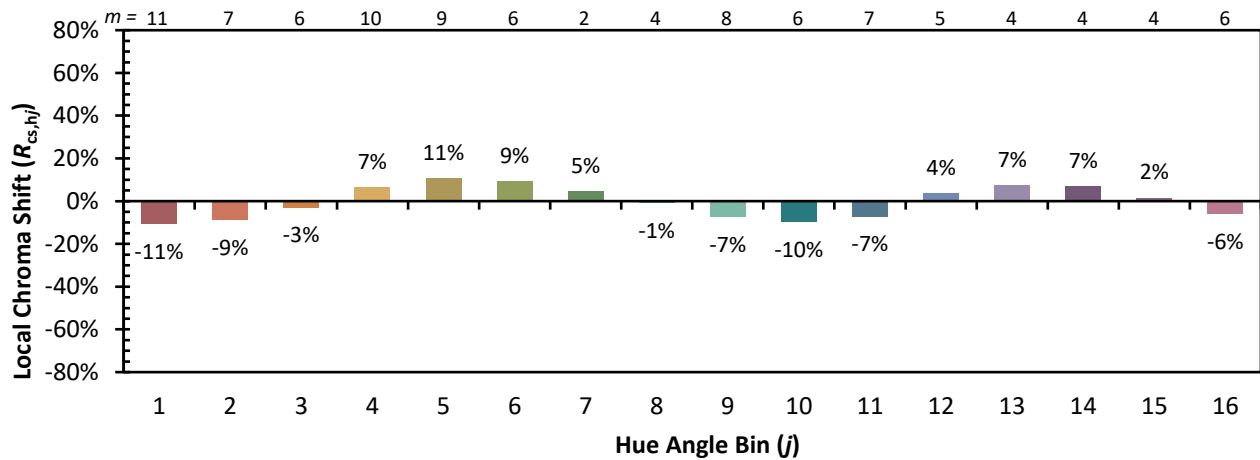


Individual Sample Fidelity Index ($R_{f,i}$)

CES01 = 86	CES26 = 74	CES51 = 89	CES76 = 70
CES02 = 63	CES27 = 88	CES52 = 92	CES77 = 86
CES03 = 31	CES28 = 89	CES53 = 81	CES78 = 72
CES04 = 70	CES29 = 67	CES54 = 87	CES79 = 90
CES05 = 50	CES30 = 68	CES55 = 85	CES80 = 88
CES06 = 51	CES31 = 71	CES56 = 78	CES81 = 78
CES07 = 42	CES32 = 70	CES57 = 76	CES82 = 95
CES08 = 41	CES33 = 71	CES58 = 78	CES83 = 90
CES09 = 29	CES34 = 82	CES59 = 92	CES84 = 94
CES10 = 76	CES35 = 90	CES60 = 95	CES85 = 86
CES11 = 59	CES36 = 93	CES61 = 93	CES86 = 72
CES12 = 65	CES37 = 87	CES62 = 83	CES87 = 85
CES13 = 43	CES38 = 75	CES63 = 77	CES88 = 83
CES14 = 74	CES39 = 94	CES64 = 83	CES89 = 75
CES15 = 71	CES40 = 89	CES65 = 77	CES90 = 81
CES16 = 47	CES41 = 85	CES66 = 80	CES91 = 96
CES17 = 50	CES42 = 86	CES67 = 79	CES92 = 73
CES18 = 56	CES43 = 81	CES68 = 84	CES93 = 84
CES19 = 72	CES44 = 99	CES69 = 91	CES94 = 64
CES20 = 66	CES45 = 87	CES70 = 78	CES95 = 80
CES21 = 87	CES46 = 82	CES71 = 76	CES96 = 84
CES22 = 79	CES47 = 77	CES72 = 92	CES97 = 87
CES23 = 92	CES48 = 71	CES73 = 71	CES98 = 81
CES24 = 91	CES49 = 81	CES74 = 93	CES99 = 74
CES25 = 72	CES50 = 89	CES75 = 74	



Color Rendition by Hue-Angle Bin



Measure Comparisons



(END OF REPORT)